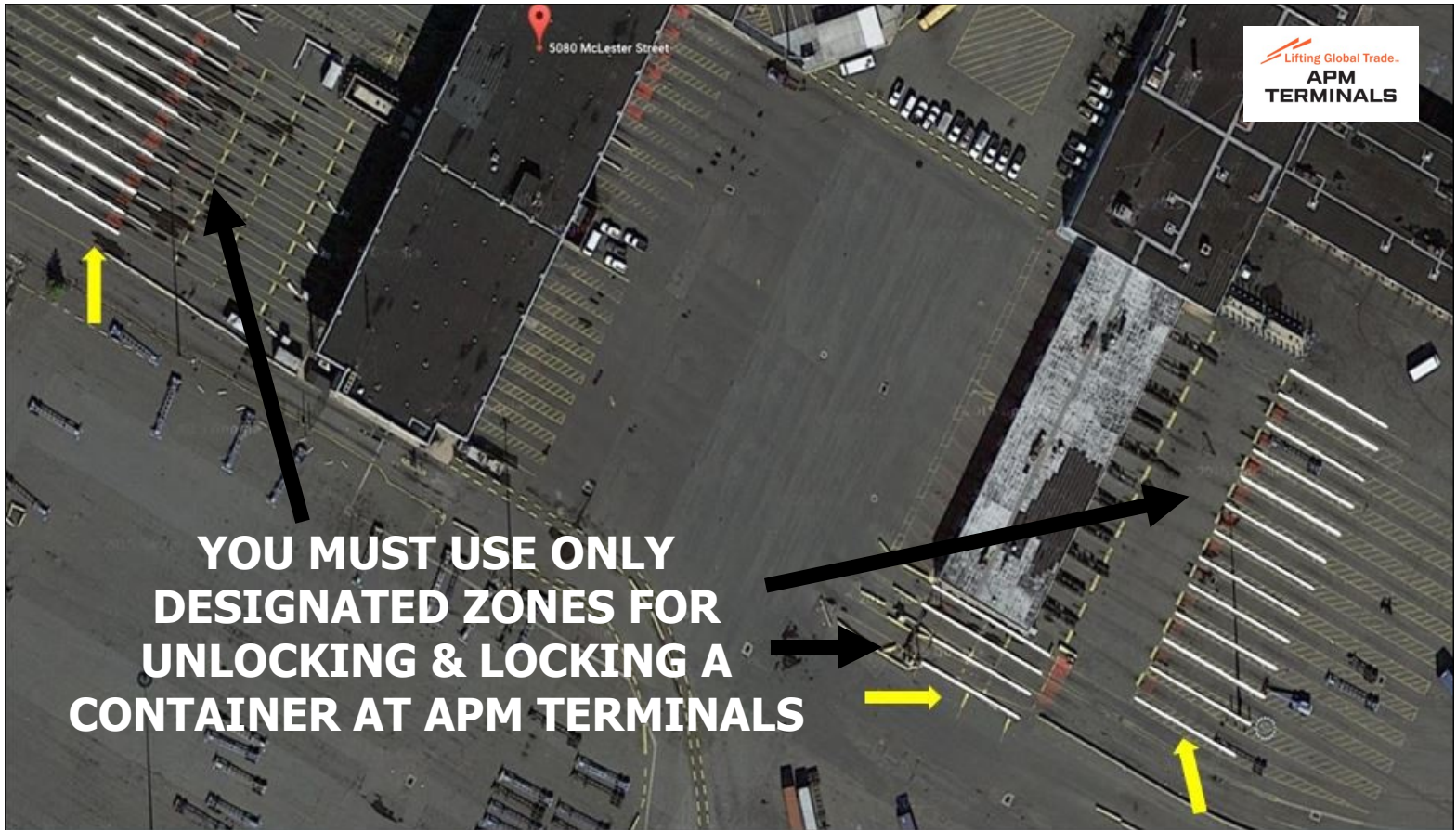


ATTENTION DRIVERS

IMPORTANT SAFETY ADVISORY AT APM TERMINALS! New Areas Designated for Unlocking & Locking Containers

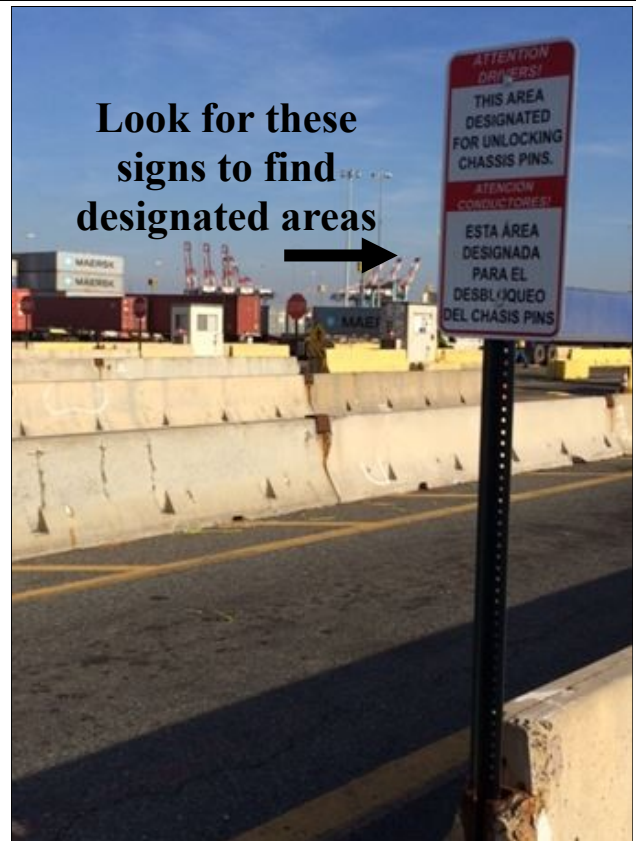


YOU MUST USE ONLY DESIGNATED ZONES FOR UNLOCKING & LOCKING A CONTAINER AT APM TERMINALS

DRIVERS MUST NOT LEAVE THEIR TRUCKS WHEN OUTSIDE THE DESIGNATED AREA

SAFETY VIOLATIONS WILL BE ISSUED!

Please follow all safety rules while on terminal



Look for these signs to find designated areas

Thank you for your cooperation!

This important advisory is brought to you by the Association of Bi-State Motor Carriers